

PATLITE[®]
New Frontiers in Safety, Security and Comfort.

Brilliant Illumination, Broader Coverage

Ideal for
Workstations
Machine Lighting
Control Cabinets



LED Work Light

CWF

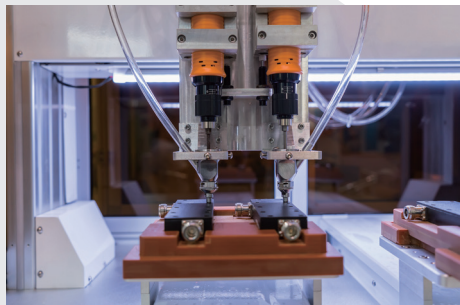


Effectively illuminate your work spaces to increase productivity

Workstations



Machine Lighting



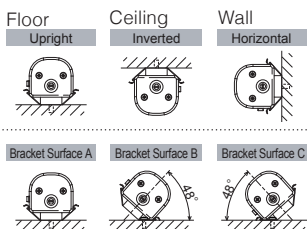
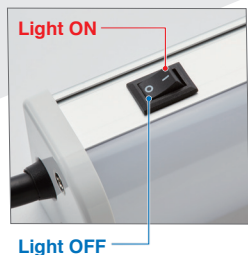
Control Cabinets



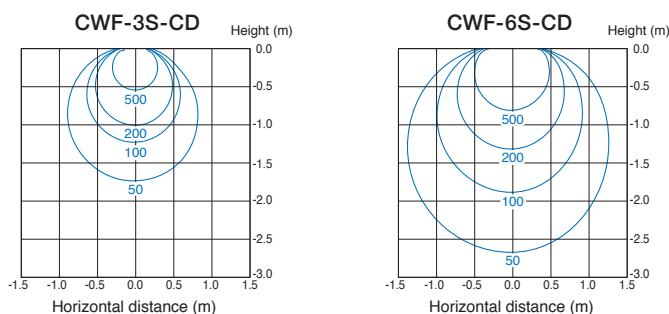
User-Friendly Operation

Rocker Switch

Simple Installation



Illuminance Distribution Chart (lx)



Brackets

Standard Mounting Bracket



※ Mounting screws not included.
Recommended Torque : 1.5Nm

Option Swivel Bracket CWF-001



Adjustment Angle 130°



※ Accessory Bracket Screw 2pcs included.
Mounting screws not included.

Option Magnetic Mounting Bracket CWF-002

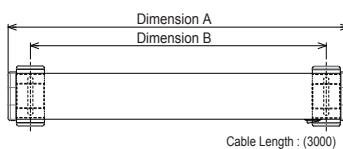


※ Accessory Bracket Screw 2pcs included

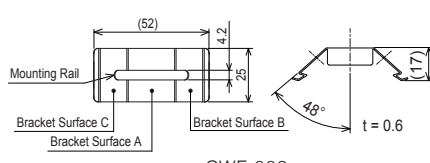
Diagrams

Unit : mm

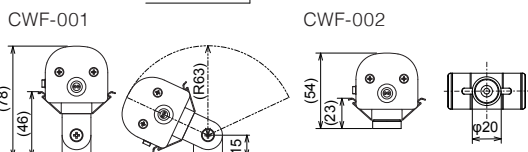
LED Work Light



CWF Standard Mounting Bracket (2 pcs)



Model	Dimension A	Dimension B
	Body Length	Bracket Pitch
CWF3S-□-CD	300	260
CWF6S-□-CD	600	560



How to Order

Type	Full Length	Rated Voltage /Standards	Luminous Color
CWF	↓	-	↓
3S : 300mm			CD : Daylight
6S : 600mm			
		24 : 24V DC / UL LISTED, CE	

Specifications

Model	CWF3S-24	CWF6S-24
Color Temperature (typ.)	5700 K	
Illuminance (typ.) (Center) 1.0m	165 lx	320 lx
Total Luminous Flux (typ.)	500 lm	1000 lm
Rated Voltage	24V DC	
Operating Voltage Range	21.6-26.4V DC	
Rated Power Consumption	5 W	10W
Operating Ambient Temperature	- 25 °C ~ + 60 °C	
Operation Ambient Humidity	90% RH or less, no condensation	
Mounting Location	Indoor	
Mounting Direction	All Directions	
Protection Rating	IP20	
Mass (Tolerance ±10%)	0.42 kg	0.57 kg

PATLITE Corporation

International Sales Division
4-1-3, Kyutaromachi, Chuo-ku, Osaka 541-0056 Japan TEL.+81-6-7711-8953 FAX.+81-6-7711-8961 E-mail: overseas@patlite.co.jp

PATLITE (U.S.A.) Corporation

20130 S. Western Ave. Torrance, CA 90501, U.S.A. TEL.+1-310-328-3222 FAX.+1-310-328-2676 E-mail: sales@patlite.com

PATLITE (SINGAPORE) PTE LTD

No.2 Leng Kee Road, #05-01 Thye Hong Centre, Singapore 159086 TEL.+65-6226-1111 FAX.+65-6324-1411 E-mail: sales@patlite.com.sg

PATLITE (CHINA) Corporation

Room 1102-1103, No.55, Lane 777, Guangzhong Road (West), Zhabei District, Shanghai, China 200072 TEL.+86-21-6630-8969 FAX.+86-21-6630-8938 E-mail: sales@patlite.cn

PATLITE Europe GmbH

Am Soeldnermoos 8, D-85399 Hallbergmoos, Germany TEL.+49-811-9981-9770-0 FAX.+49-811-9981-9770-9 E-mail: info@patlite.eu

PATLITE KOREA CO., LTD.

A-2603, Daesung D-POLIS, 606, Seobusaet-gil, Geumcheon-gu, Seoul, 08504, Korea TEL.+82-2-523-6636 FAX.+82-2-861-9919 E-mail: sales@patlite.co.kr

PATLITE TAIWAN CO., LTD.

7F, No. 91, Huayin St, Datong District Taipei, Taiwan R.O.C TEL.+886-2-2555-1611 FAX.+886-2-2555-1621 E-mail: info@patlite.tw

PATLITE (THAILAND) CO., LTD.

Olympia Thai Tower, 15th Floor 444 Ratchadapisek Road Samsenok, Huay Kwang Bangkok 10310, Thailand TEL.+66-2-541-5431 FAX.+66-2-541-5429 E-mail: sales@patlite.co.th

www.patlite.com

● PATLITE, the PATLITE logo are either registered trademarks or trademarks of PATLITE Corporation in JAPAN and/or other countries.
● The names of other companies and products are trademarks or registered trademarks of their respective companies.



PATLITE ECO PROJECT

For the benefit of mankind and the earth, Patlite is committed to developing environmentally friendly products.

CAUTION

To ensure correct use of these products, read the "Instruction Manual" prior to use. Failure to follow all safeguards can result in fire, electric shock, or other accidents. Specifications are subject to change without notice.

O-AI09A EN 1906 A